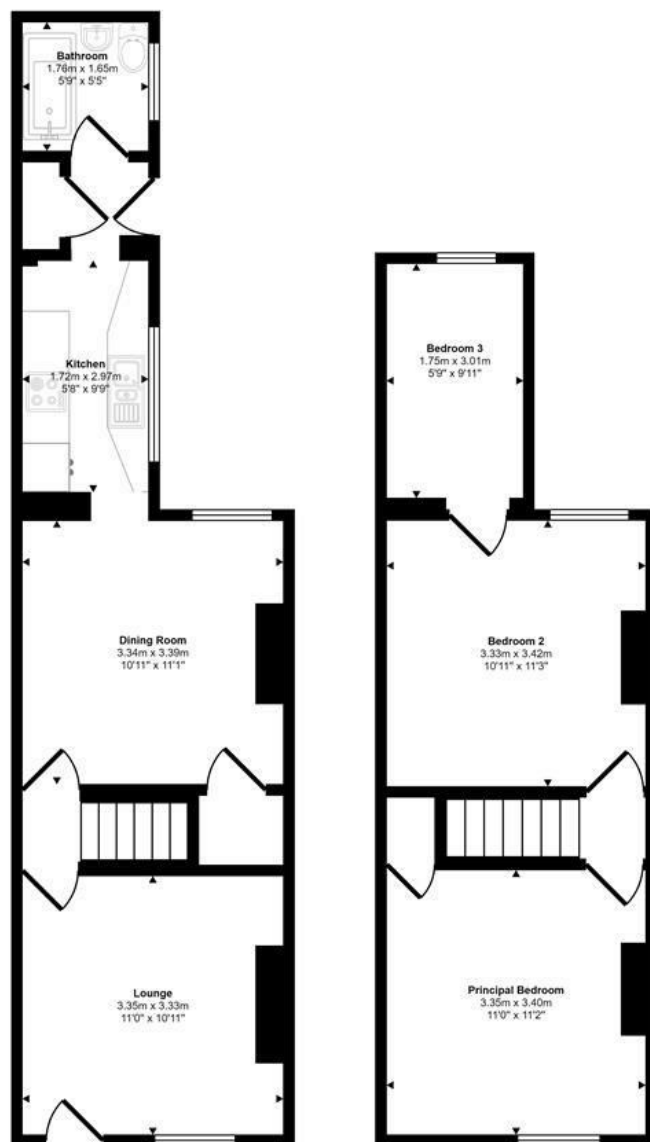




Gertrude Road | Norwich | NR3
 Guide Price £215,000

abbotFox

Approx Gross Internal Area
 70 sq m / 757 sq ft



Ground Floor
 Approx 38 sq m / 410 sq ft

First Floor
 Approx 32 sq m / 347 sq ft

This floorplan is only for illustrative purposes and is not to scale. Measurements of rooms, doors, windows, and any items are approximate and no responsibility is taken for any error, omission or mis-statement. Icons of items such as bathroom suites are representations only and may not look like the real items. Made with Made Snappy 360.

Energy Efficiency Rating		Current	Potential
Very energy efficient - lower running costs			
(92 plus) A			85
(81-91) B			
(69-80) C			
(55-68) D		51	
(39-54) E			
(21-38) F			
(1-20) G			
Not energy efficient - higher running costs			
England & Wales			EU Directive 2002/91/EC

Disclaimer – In accordance with the Property Misdescriptions Act, the company gives notice that all descriptions, references to condition, necessary permissions for use and other details are given in good faith and believed to be correct, but any intending lessees do not rely on them as statements of fact, but must satisfy themselves by inspection or other means, as to their accuracy.



abbotFox presents this stylishly renovated, mid terraced home. Located within the ever popular NR3 area of Norwich, this home represents an ideal opportunity for any first time buyer. With a wealth of amenities within easy reach, including, shops, pubs, cafe's, parks and schools, this property offers an exceptional degree of convenience.

The accommodation is neatly arranged to offer, two reception rooms, refitted kitchen and bathroom to the ground floor. The first floor offers two double bedrooms and further "box-style" third bedroom. Externally, the enclosed rear garden affords a high degree of privacy. Offered to the market with no onward chain, an internal viewing comes highly recommended.

Guide price: £215,000 - £225,000

Agents Note: In accordance with Section 21 of the Estate Agents Act 1979 we would advise all interested parties that the vendor of this property is a relative to an associate of abbotFox.

